



CHHATTISGARH STATE RENEWABLE ENERGY DEVELOPMENT AGENCY (CREDA)

(Dept. of Energy, Govt. of Chhattisgarh)
Regional Office, Larangsai Chowk, Ambikapur (C.G.)
E-mail: roscreda@gmail.com, Website: www.credacg.in

TENDER NO 3941/CREDA/SPV-PDN/2018-19

Date: 05.09.18

Standardization of Rates for the Laying of Power Distribution Network including material Supply on turn-key basis for SPV Power Plants at Vill-Sumerpur (Nageshiyapara), Vill- Raghunathpur, Vill- Sairrai, Vill-Sumerpur, Vill- Darrhidih, Vill- Batwahi, Vill-Lamgaon, Grampanchayat Bhavan- Raghunathpur, Grampanchayat Bhavan - Lamgaon, Grampanchayat Bhavan- Sumerpur, Grampanchayat Bhavan - Batwahi Block -Lundra, District-Surguja (C.G)

Important Events and their schedule for this tender are as follows-

S.No	Particulars	Date	Time	Place
1	Last Date of Submission of Tender Document, Technical Bid, and Price Bid	26.9.18	Till 12.30 AM	In the Office of Executive Engineer Regional Office CREDA Surguja
2	Examination of Technical Bid	26.9.18	From 3.30 PM	
3	Opening of Price Bid	26.9.18	From 4.30 PM	

Tender Document Cost-Rs 1000.00

Tender Document can be Purchased from our Regional Office CREDA Surguja. The cost of tender as mentioned in NIT, which shall have to be deposited along with the tender document.

CONTENTS

No.	<u>Description</u>
<u>PART - I : TECHNICAL BID</u>	
1.	Notice Inviting Tender
2.	Check List
3.	Undertaking of the tenderer
4.	Instruction for tenderer
5.	General condition of contract
6.	Scope of work
7.	Technical Specifications
<u>PART - II : FINANCIAL BID</u>	
	1. Schedule of Rates -



No. 3941/CREDA/SPV-PDN/Tender/2018-19

Date: 05.09.18

NOTICE INVITING TENDER

CREDA invites sealed tenders from experienced and registered in CREDA as a System Integrator/Vender/PDN Contractors of CREDA for standardization of Rates for the Laying of Power Distribution Network Work including material Supply on turn-key basis for SPV Power Plants at various sites - Vill- Sumerpur (Nageshiyapara) , Vill- Raghunathpur, Vill- Sairrai , Vill- Sumerpur, Vill- Darrhidih, Vill- Batwahi, Vill-Lamgaon, Grampanchayat Bhavan- Raghunathpur, Grampanchayat Bhavan - Lamgaon , Grampanchayat Bhavan- Sumerpur, Grampanchayat Bhavan- Batwahi, Block -Lundra, District-Surguja (C.G.) as per following details-

S.No.	Particulars of Work	Estimated Cost (in Rs)	Qty.	Cost of Tender Document (in Rs.)	EMD (in Rs)
01	Laying of Power Distribution Network including material Supply on turn-key basis for SPV Street Light Power Plants 1 Kw as per Specification and Drawings - Vill- Sumerpur (Nageshiyapara) , Block- Lundra, District - Surguja, (C.G.)	446000	01	1000/-	15000
02	Laying of Power Distribution Network including material Supply on turn-key basis for SPV Street Light Power Plants 2 Kw as per Specification and Drawings - Vill- Raghunathpur , Block- Lundra , District - Surguja, (C.G.)	773000	01		20000
03	Laying of Power Distribution Network including material Supply on turn-key basis for SPV Street Light Power Plants 2 Kw as per Specification and Drawings - Vill- Sairrai , Block- Lundra , District - Surguja, (C.G.)	773000	01		20000
04	Laying of Power Distribution Network including material Supply on turn-key basis for SPV Street Light Power Plants 2 Kw as per Specification and Drawings - Vill- Sumerpur , Block- Lundra , District - Surguja, (C.G.)	773000	01		20000
05	Laying of Power Distribution Network including material Supply on turn-key basis for SPV Street Light Power Plants 2 Kw as per Specification and Drawings - Vill- Darridih , Block- Lundra , District - Surguja, (C.G.)	773000	01		20000

06	Laying of Power Distribution Network including material Supply on turn-key basis for SPV Street Light Power Plants 2 Kw as per Specification and Drawings - Vill- Batwahi ,Block- Lundra ,District – Surguja,(C.G.)	773000	01		20000
07	Laying of Power Distribution Network including material Supply on turn-key basis for SPV Street Light Power Plants 2 Kw as per Specification and Drawings - Vill- Lamgaon,Block- Lundra ,District – Surguja.(C.G.)	773000	01		20000
08	Laying of Indoor Power Distribution Network including material Supply on turn-key basis for SPV Power Plants 2 Kw as per Specification and Drawings - GrampanchayatBhavan-Raghunathpur,Block- Lundra ,District – Surguja.(C.G.)	104000	01		4000
09	Laying of Indoor Power Distribution Network including material Supply on turn-key basis for SPV Power Plants 2 Kw as per Specification and Drawings GrampanchayatBhavan - Lamgaon,Block- Lundra ,District – Surguja.(C.G.)	104000	01		4000
10	Laying of Indoor Power Distribution Network including material Supply on turn-key basis for SPV Power Plants 2 Kw as per Specification and Drawings - GrampanchayatBhavan-Sumerpur,Block- Lundra ,District – Surguja.(C.G.)	104000	01		4000
11	Laying of Indoor Power Distribution Network including material Supply on turn-key basis for SPV Power Plants 2 Kw as per Specification and Drawings - GrampanchayatBhavan - Batwahi,Block- Lundra ,District – Surguja.(C.G.)	104000	01		4000
Total		5500000/			151000/

Eligibility for Tenderer:-

1. Tenderer should be Registered as PDN Suppliers/PDN Contractors of CREDA in SPV Programme for the FY 2018-19.
2. Tenderer should have an experience of Supply and Laying of Power Distribution Network under RVE ,DDG (atleast one) and other Outdoor PDN Work of SPV projects with CREDA.
3. For other details see eligibility conditions of the tender documents.
4. Pre Bid meeting will be held on **24.9.18**

Important Events and their schedule for this tender are as follows-

S.No	Particulars	Date	Time	Place
1	Last Date of Submission Tender Document, Technical Bid,and Price Bid	26.9.18	Till 12.30 AM	In the Office of Executive Engineer, CREDA,Regional Office, Surguja
2	Examination of Technical Bid	26.9.18	From 3.30 PM	
3	Opening of Price Bid	26.9.18	From 4.30 PM	

Details of this tenders are mentioned at Tender Documents which can be Purchas from our Regional Office LarangsaiChowk ,Ambikapur(Surguja). The tenderer should have to deposit tender document cost, along with EMD as mentioned at NIT through demand draft payable to “ EE,CREDA, Regional Office,Surguja “ while submitting tender .Tender Documentswhich can be download from the website of creda: www.creda.cgstate.gov.in.

CREDA reserves all rights to accept/reject any or all tenders in full/part without assigning any reasons.

**Executive Engineer
CREDA, Regional Office,Surguja**

CHECK LIST

To ensure that your tender submitted to CREDA is complete in all respects, please go through the following checklist & tick mark for the enclosures attached with your tender:

S.No.	Description	Attached / Not Attached	Page no. if attached
1	EMD package (proof of submission)		
2	Tender Document Fee (proof of submission)		
3	Copy of System Integrator /Vender/PDN Contractor Registration Certificate CREDA in SPV Programme for FY 2018-19		
4	Balance Sheets of last three financial years certified by a registered Chartered Accountant showing positive net worth and minimum average annual turnover of 1.5 times the each package cost in which bidder is participating.		
5	List and Completion and Performance Certificates of PDN Projects done / installed by the Bidder in Govt Scheme Scheme of CREDA		
6	Original Tender document duly signed & sealed on each page, as a confirmation of acceptance of Terms & Conditions (T&C)		
7	Declaration of the supplier about any relatives working with CREDA		

(Sign & Seal of the Tenderer)

Details of EMD & Tender Document Fee Attached

S.No.	Description
1	Earnest Money Deposit - Earnest Money Deposit of Rs.151000, submitted in the form of Demand Draft/Banker's Cheque, drawn onBank,Branch, bearing DD/BC No..... dated.....is attached herewith.
2	Tender Document Fee - Tender Document Fee of Rs. 1000.00 /-, submitted in the form of Demand Draft/Banker's Cheque, drawn onBank,Branch, bearing DD/BC No..... dated.....is attached herewith.

(Sign & Seal of the Tenderer)

UNDERTAKING OF THE TENDERER

I/We have read carefully and examined the notice inviting tender, schedule, General Rules and terms and conditions of the contract, special conditions, Schedule of Rates and other documents and Rules referred to in the tender document for the supply.

I/We hereby tender my rates for the execution of the work for CREDA as specified within the time stipulated in the schedule in accordance with all aspects with the specifications, designs, drawings and instructions with such conditions so far as applicable.

I/We agree to keep the tender open for Ninety (90) days from the due date of submission there of and not to make any modifications in its terms and conditions.

A sum of Rs**151000** hereby forwarded as earnest money in the form of crossed demand draft payable to CREDA at Raipur (C.G.). If I/We, fail to commence or complete the sanction ordered in specified time I/We agree that the CREDA shall, without prejudice to any other right or remedy, be at liberty to forfeit the said Earnest Money absolutely. The said Earnest Money shall be retained by CREDA towards security deposit to execute all the works referred to in the tender documents upon the terms and conditions contained or referred to therein and to carry out such deviations as may be required by CREDA.

I/We hereby declare that I/We shall treat the tender documents, specifications and other records connected with the work as secret/confidential and shall not communicate information derived there- from to any person other than a person to whom I/We have authorized to communicate the same or use the information in any manner prejudicial to the safety of CREDA/Government.

I/We shall abide to all the laws and shall be responsible for making payments of all the taxes, duties, levies and other Govt. dues etc. to the appropriate Govt. departments.

Our state sales tax registration TIN No. is _____ and GST registration No. _____ . The PAN No. under the Income Tax Act is _____

I/We shall be responsible for the payment of the respective taxes to the appropriate authorities and should I/we fail to do so, I/we hereby authorize CREDA to recover the taxes due from us and deposit the same with the appropriate authorities on their demand.

Dated:

Signature

Place:

Name of Tenderer with seal

Witness

Signature:

Name:

Postal Address:

INSTRUCTIONS FOR TENDERERS

1. Eligibility Criteria:

- A. Tenderer should be registered in CREDA as System Integrator / Vendor/PDN Contractor for the financial year 2018-19 on the date of opening of this Bid.
- B. Tenderer should have minimum one year experience of Supply or Laying of Power Distribution Network under RVE, DDG and Outdoor PDN Work of SPV projects . Experience certificate issued by Govt/ Govt Undertaking shall only be considered.
- C. Tenderers must have a minimum positive net worth during last three FY.
- D. Tenderers should have a minimum average annual turnover of 1.5 times the each package cost in which bidder is participating.
- E. Bidder will have to submit audited copy of balance sheet certified by a registered chartered accountant as a proof for point no. 1.C and 1.D.
- F. The Bidder should have valid GST registration certificate in the state. A copy of which should be enclosed
- G. Tenderes must have their office and service centre in Chhattisgarh State.
- H. Authorization of person representing Tenderer from Director / Proprietor / Partner of the Firm/ Company of the tenderer .
- I. Tenderer have to attend pre bid meeting.Those does not attend the meeting will not eligible for bid.

Important Events and their schedule for this tender are as follows-

S.No	Particulars	Date	Time	Place
1	Submission of Tender Document, Technical Bid,and Price Bid	26.9.18	Till 12.30 AM	In the Office of Executive Engineer, CREDA, Regional Office,Surguja
2	Examination of Technical Bid	26.9.18	from 3.30 PM	
3	Opening of Price Bid	26.9.18	From 4.30 PM	

2. Tender Documents must reach in the Office of Executive Engineer CREDA Surguja latest by 12.30PM on 26.9.18 Tenders submitted after scheduled time and date shall not be considered.
3. Tender Documents should be submitted in prescribed manner in separate envelopes duly super scribed and placed as follows- (A) Tender Fees and EMD , (B) Eligibility Documents as per point 1(A) to 1(I) mentioned above (C) Technical Bid and Complete tender document in original duly signed by authorized signatory on each & every page of the tender document. (D) Price Bid.
4. The envelopes must be clearly marked as "(A) Tender Fees and EMD / (B) Eligibility Documents / (C) Technical Bid and Complete tender document in original / (D) Price Bid. **Of "TENDER NO3941/ CREDA/SPV-PDN/18-19DT 5.9.18DUE ON 26.9.18."**
5. The Specifications of PDN Materials/Electrical Materials should be as specified in the tender in schedule attached.

6. Bidder shall have to submit details of GST registration number and PAN issued by the appropriate authority.
7. The documentary evidence for meeting the eligibility criteria must mandatorily be submitted along as per check list with tender in prescribed manner.
8. Tenderers must enclose the safety procedure & manual.
9. When Price Bid are delivered through messenger, it should be submitted in the tender box kept in the office of the Executive Engineer, Regional Office CREDA Surgujaor before 12.30 PM dated 26.9.18 Nobody is authorized to receive or grant receipt for tender delivered on behalf of CREDA.
10. Tenderer should quote their rates considering variation of site conditions, variation in price of different components and keeping the quantum and quality of work in mind. If CREDA anticipates that rate is abnormally low or high, CREDA shall have liberty to amend the rates or reject the tender.
11. **VALIDITY:** Full descriptive particulars and complete specifications should accompany the offer. Offers should be kept open for acceptance for at least three months from the date of opening. After finalization of this tender the approved rates shall be valid till one year from the date of award; however CREDA shall have liberty to increase or decrease this validity if needed.
12. The terms, conditions and specifications mentioned in tender document shall be binding on the tenderers and no condition or stipulation contrary to the conditions shall be acceptable. It may please be noted that the tenderers who do not accept terms and conditions stipulated in this tender documents, their offers shall be liable to be rejected out-rightly without assigning any further reasons.
13. Each page of tender document & enclosures shall be signed by the tenderer and seal affixed. All the pages of the documents issued must be submitted along with the offer. In case of any corrections / alterations in the tender, the tenderer should attest the same; otherwise tenders may not be considered.
14. Tenderers are also instructed to submit their tenders in properly arranged manner (with index , proper paging and with flags on important documents). Incomplete, lose, conditional or improper arranged tenders will not be accepted.
16. CREDA reserves the right (i) to reject or accept any or all tenders wholly or partly without assigning any reason on the grounds considered advantageous to CREDA, whether it is the lowest tender or not obtained in this tender.
17. Offers through Telegraph/ Fax/Emails or open offers etc. received shall be summarily rejected.
18. All the tenderers shall essentially indicate the break-up of prices as shown in Price Bid. In case any of the charges are not included in the quoted prices, the same shall be clearly shown as extra, indicating specifically the rate/scale of such charges. The lowest prices quoted shall be considered.
19. **TENDER DOCUMENT FEE AND EARNEST MONEY:**
Each tenderer should submit Tender Document Fee and earnest money in the form of Demand Draft/Pay Order or RTGS/NEFT as mentioned in the NIT vide no 3941/

CREDA/SPV-PDN/Tender/2018 Date: 5.9.18., in a separate envelope as prescribed at page no. 6 else they will summarily be rejected and returned. Tender Document Fee, EMD submitted in any other form e.g.

20. **FORFEITURE OF EARNEST MONEY DEPOSIT:**

It should be clearly understood that in the event of tenderer failing to enter into the agreement in the prescribed format on their quoted rates and also fails to execute assigned works within stipulations, if he is so communicated within the validity period of the offer, the full amount of earnest money shall be forfeited and tenderer will be debarred from future business with CREDA. CREDA's decision in this respect will be final and binding on the tenderer.

21. **PRICE:**

The prices quoted should be firm and F.O.R. destination including all taxes including GST and all duties, packing, forwarding freight, insurance and any other incidental charges. Eligible tenderer will have to submit break up of costs and taxes before execution of agreement with CREDA so as to ensure tax deposition as per Govt Rules accordingly. Pl note that "C" Forms/ Any Road Permit shall not be issued by CREDA.

22. **SAMPLES:**

If Require CREDA may inspect the consignment before dispatch of the material at shall be delivered/ accepted as per the scope of work and specifications, as get it tested in accreted laboratory at its own cost.

23. **TAX OBLIGATIONS:**

TDS for Income Tax, Service Tax, Commercial Tax (GST) , Civil Work etc shall be recovered under various acts and deposited with the appropriate authority. Eligible tenderer will have to submit break up of costs and taxes before execution of agreement with CREDA so as to ensure tax deposition as per Govt Rules accordingly.

24. **JURISDICTION OF THE COURT:**Any dispute arising out of the contract shall be subject to the jurisdiction of court in Chhattisgarh.

GENERAL CONDITIONS OF CONTRACT

1. **DEFINITIONS:** In writing General Conditions of Contract, the specifications and bill of quantity, the following words shall have the meanings hereby indicated, unless there is something in the subject matter or content inconsistent with the subject.

CREDA shall mean the Chhattisgarh State Renewable Energy Development Agency represented through the CEO.

Work shall mean any work entrusted to the tenderer as mentioned in the scope of work and sanction order.

The "Engineer in charge" shall mean the Engineer or Engineers authorized by CEO, CREDA for the purpose of this contract. Inspecting Authority shall mean any Engineering person or personnel authorized by CREDA to supervise and inspect the entire work done of PDN.

"The Eligible Contractor/Tenderer" shall mean the tenderer awarded with the contract or their successors and permitted assigns. Contract Price shall mean the sum named in or calculated in accordance with the provisions of the contract as the contract price. General Conditions shall mean the General conditions of Contract.

"Specifications" shall mean the specifications annexed to these General Conditions of contract and shall include the schedules and drawings attached thereto or issued to the eligible Contractor from time to time, as well as all samples and pattern, if any,

"Month" shall mean calendar month. "Writing" shall include any manuscript, typewritten, printed or other statement reproduced in any visible form whether under seal or written by hand.

2. **CONTRACT DOCUMENT:**

The term "Contract" shall mean and include the General conditions, specifications, schedules, drawings, work orders etc., issued against the contract schedule of price or their final general conditions, any special conditions applying to the particular contract specification and drawings and agreement to be entered into. Terms and conditions not herein defined shall have the same meaning as are assigned to them in the Indian contract Act or any other Act in vogue or by any person of common knowledge and prudence.

3. **MANNER OF EXECUTION:**

Execution of work shall be carried out in an approved manner as outlined in the technical specifications or where not outlined, in accordance with desired Specifications laid down by CREDA, to the reasonable satisfaction of the Engineer.

- i) The eligible tenderer shall conduct a detailed survey of site and submit Site Clearance and necessary documents and survey details in concerned District Office of CREDA in prescribed manner.
- ii) District / Regional Office CREDA shall examine these reports and after satisfaction forward these to concerned Superintending Engineer of Zonal office of CREDA Bilaspur for approval.
- iii) The Contractor shall start work within 15 days after the date of issue of work Order. Workorder will be given to the chosen System Integrator only after execution of the agreement with CREDA.

- iv) All the materials required for the installation PDN as per Work Order issued shall be kept at site in the custody of the Contractor . CREDA shall not be responsible for any loss or damage of any material during the installation.
- v) All the electrical works should be done as per Indian electricity Act. The persons engaged for carrying out electrical works should have a valid license of required category accordingly.
- vi) After installation and joint inspection will be done in presence of beneficiary, Contractor and CREDA and after successful commissioning of PDN Work and its approval from CREDA a JCC/Inspection report along with material consumption will be signed and the claim will be forwarded for payments as per guidelines and procedures of CREDA.
- vii) A Line diagram of PDN work is to be submitted by Tenderer before payment.

4. VARIATIONS, ADDITIONS & OMISSIONS:

CREDA shall have the right to alter, amend, omit, split or otherwise vary the quantum of work, by notice in writing to the SI. The eligible Contractor shall carry out such variation in accordance with the rates specified in the contract so far as they may apply and where such rates are not available; those will be mutually agreed between CREDA and the eligible SI.

5. INSPECTION DURING WORK EXECUTION:

The Engineer in Charge or his authorized representative (s) shall be entitled at all reasonable times to inspect and supervise the work undergoing. Such inspection will not relieve the eligible Contractor from their obligations under this contract. Material can be inspected before dispatch by the authorized representatives of CREDA at the factory at the cost of the eligible SI, if desired by CREDA.

6. COMPLETION OF WORK:

Time being the essence of contract, the installation of the PDN shall be completed within the time schedule prescribed in the Work order.

7. ELIGIBLE Contactor DEFAULT LIABILITY:

CREDA may by written notice of default to the eligible Contractor, terminate the contract in circumstances detailed hereunder:

- (a) If in the opinion of the CREDA, the eligible Contactor fails to complete the work within the time specified in the Work Order or within the period for which extension has been granted by CREDA to the eligible CONTRACTOR.
- (b) If in the opinion of CREDA, the eligible Contactor fails to comply with any of the provisions of this contract.
- (c) In the event of CREDA terminating the contract in whole or in part as provided in paragraph (a) above, CREDA reserves the right to engage another eligible Contactor or agency upon such terms and in such a manner as it may deem appropriate and the eligible CONTRACTOR shall be liable to CREDA for any additional costs or any losses caused to CREDA as may be required for the completion of the PDN Work and or for penalty as defined under this tender document until such reasonable time as may be required for the final completion of the work.
- (d) In the event CREDA does not terminate the contract as provided in paragraph (a) the eligible CONTRACTOR shall continue performance of the contract, in which case he shall be liable to CREDA for penalty for delay as set out in this tender document until the work is completed.

8. FORCE MAJEURE:

The eligible CONTRACTOR shall not be liable for any penalty for delay or for failure to perform the contract for reasons of FORCE MAJEURE such as of God, acts of public, enemy, naxal problems, acts of government, cyclone, fires, floods, epidemics, quarantine restrictions, strikes, freight embargoes provided that the contract, shall within 10 (ten) days from the beginning of such delay notice the CREDA in writing of the cause of delay. CREDA shall verify the facts and grant such extension Contractor on as facts justify. Delay in supply of any PDN material or repair works to be done etc by the related contractor, to whom the tenderer has placed order, shall also not be treated as force majeure.

9. REJECTION OF WORKS:

In the event of any of the material supplied/ work done by the eligible CONTRACTOR is found defective in material or workman ship or otherwise not in conformity with the requirements of this contract specifications, CREDA shall either reject the material and/ or work and advise the eligible CONTRACTOR to rectify the same. The eligible CONTRACTOR on receipt of such notices shall rectify or replace the defective material and rectify the work, free of cost. If the eligible CONTRACTOR fails to do so, CREDA may,

- i At its option replace or rectify such defective materials and/ or work and recover the extra cost so involved from the eligible CONTRACTOR plus fifteen percent service charges of the cost of such rectification, from the eligible CONTRACTOR and/ or terminate the contract for balance work/ supplies with enforcement of penalty as per contract
- ii Defective materials/ workmanship will not be accepted under any conditions and shall be rejected outright without compensation. The eligible CONTRACTOR shall be liable for any loss/ damage sustained by CREDA due to defective work.

10. EXTENSION OF THE TIME:

If the completion of installation is delayed due to any reason beyond the control of the eligible CONTRACTOR, the eligible CONTRACTOR shall without delay give notice to the CREDA in writing of his claim for an extension of time. CREDA on receipt of such notice may agree to extend the contract/delivery date of the Solar System as may be reasonable but without prejudice to other terms and conditions of the contract.

11. MAKES OF EQUIPMENTS TO BE USED IN THE WORK:

The eligible CONTRACTOR has to ensure that equipments as per Technical Requirements of guidelines of CREDA as complied with. The eligible CONTRACTOR has also to ensure that he will use only components of approved vendors of CREDA. The material/works for which CREDA/MNRE or BSI or ISI specification is not available, engineer-in-charge of the works will examine and approve the material/works, preferably of all makes on which CREDA has report of satisfactory performance. Test certificates for all major component should be submitted to the engineer-in-charge of the works before installation of the same.

12. WARRANTEE PERIOD AND POST INSTALLATION SERVICES:

The work done/ material supplied by the eligible CONTRACTOR should be warranted for satisfactory operation and against any defect in material and workmanship including Luminaries, Controllers and other balance of equipments, at least for a period of 01(one) years

and also all the fabricated items should be warranted for a period of 5 years from the date of handingover/commissioningof the SPV PDN works including other works as per scope of work. The above warrantee certificates shall be furnished to the CREDA for approval. Any defect noticed during this period should be rectified by the supplier free of cost upon written notice from CREDA provided such defects may be due to bad workmanship or bad materials used. The warrantee period shall be extended by the period during which the PDN work remains non-operative due to reasons within control of the eligible CONTRACTORS. This warrantee must be an unconditional onsite warrantee and the eligible CONTRACTOR will have to replace the defective material within 7days positively from the date of information given to him. Care should necessarily be taken to make the System operational, once the reporting of the fault/non operational status is done, within a week. If the PDN work is not made operational within 7 days CREDA may rectify the same at the cost of CONTRACTOR, and the warrantee period shall be extended for a month for the same. This warrantee must be an unconditional onsite warrantee and the eligible CONTRACTOR will have to replace the defective material within 7 days positively from the date of information given to him. System Integrators shall have to establish their service stations in the allocated area and shall have to keep sufficient quantity of spares and man power to ensure proper service network for taking care of smooth functioning of Workdone by them. Contractor shall have to give a toll free number to register complaints.

13. TERMS OF PAYMENT:

The following terms of payment shall apply for the tender: -

- a) 95% of the cost as per the work order after satisfactory supply, installation, commissioning & performance test of the Work done site with proper handing over.
- b) Balance 05% of the cost shall be retained by CREDA as Security Deposit for a period of five years. However the same may be released to CONTRACTOR on submission of bank guarantee or TDR (duly pledged in favour of CREDA) of equivalent amount in prescribed format valid for a period of five years, issued by any scheduled bank.

14. MATTER RELATED WITH CHANGE IN TAX:-

- a) Any change in tax rates including due to implementation GST shall be pass through.
- b) If total rate of (Ex works + Tax) undergoes variation due to this CREDA reserves the right to make rate offer/ negotiation to arrive at a reasonable rate or reserves right to discontinue for award upon failure of acceptance of offered rates or failure to arrive at reasonable rate through negotiation.

15. PENALTY FOR DELAY IN COMPLETION OF CONTRACT:

If the eligible CONTRACTOR fails to complete the erection, testing and commissioning etc, within the phased time schedule specified in the work order or any extension granted there to, CREDA will recover from the eligible CONTRACTOR as penalty a sum of one percent (1.0%) of the system price of the uncompleted portion of the work for each calendar month of delay or part thereof. For this purpose, the date of taking over shall be reckoned as the date of completion. The total penalty shall not exceed 5% (five percent) of the Cost.

16. SECURITY DEPOSIT (SD):

The Earnest Money shall be retained by CREDA towards security deposit after agreement is done to execute all the works referred to in the tender documents upon the terms and conditions contained or referred to therein and to carry out such deviations as may be required by CREDA.

- 17. INSURANCE:**The eligible CONTRACTOR shall arrange insurance coverage for the materials m at his/beneficiary's custody for the work under execution and successful commissioning and subsequent handover to the beneficiary. The eligible CONTRACTOR shall take up insurance or

such other measures for the manpower so as to cover the claim for damage arising under workmen's compensation Act and other applicable State/ Central laws. CREDA shall not bear any responsibility on this account.

17. PENALTY DUE FROM THE ELIGIBLE CONTRACTOR:

All costs of damages for which the eligible CONTRACTOR is liable to the CREDA will be deducted from any money due to the eligible CONTRACTOR including the security deposit.

18. ELIGIBLE CONTRACTOR'S RESPONSIBILITY:

Notwithstanding anything mentioned in the specifications of subsequent approval or acceptance of the PDN Work by CREDA, if any, the ultimate responsibility for satisfactory performance of the entrusted work shall rest with the eligible SI. If in any case the eligible Contractor does not complete the work as per the Work orders issued to them then CREDA may take over the task & complete the project at the cost of eligible SI.

19. RESPONSIBILITY TO RECTIFY THE LOSS AND DAMAGE:

If any loss or damage occurs to the work or any part thereof or materials/ plant/ equipments for incorporation therein the period for which the eligible Contractor is responsible for the cause thereof or from any cause whatsoever, the eligible Contractor shall at his own cost rectify/ replace such loss or damage, so that the permanent work confirms in every respect with the provision of the contract to the satisfaction of the Engineer. The eligible Contractor shall also be liable for any loss or damage to the work/ equipments occasioned by him in course of any operation carried out to him during performing the contract.

20. RESPONSIBILITY TOWARDS THE WORKMAN OR OUT SIDERS:

The eligible Contractor shall have to take insurance coverage from any authorized Insurance Company against Workmen compensation due under Workmen Compensation Act and submit copy of the insurance document before issuance of Sanction order. The eligible Contractor shall ensure all safety measures during execution and repairs of the work. CREDA, will, in no case be responsible for any accident fatal or non-fatal, caused to any workman or outsider in course of transport or execution or repairs of work. All the expenditure including treatment or compensation will be entirely borne by the eligible SIs. The eligible Contractor shall also be responsible for any claims of the workers including PF, Gratuity, ESI & other legal obligations.

21. NON-ASSIGNMENTS:

The eligible Contractor shall not assign or transfer the work orders issued as per this contract or any part thereof without the prior approval of CREDA.

22. CERTIFICATES NOT TO AFFECT RIGHTS OF CREDA:

The issuance of any certificate by CREDA or any extension of time granted by CREDA shall not prejudice the rights of CREDA in terms of the contract nor shall they relieve the eligible Contractor of his obligations for due performance of the contract.

23. SETTLEMENT OF DISPUTES THROUGH ARBITRATION:

- i. Except as otherwise specifically provided in the contract, all disputes concerning questions of fact arising under the contract shall be decided by the Chief Executive Officer (CEO), CREDA provided a written appeal by the eligible Contractor is made to CREDA. The decision of the CEO, CREDA shall be final and binding to the all concerns.
- ii. Any dispute or difference including those considered as such by only of the parties arising out of or in connection with the contract shall be to the extent possible be settled amicably between the parties. If amicable settlement cannot be reached then all disputed issues shall be settled by arbitration.

24. LAWS GOVERNING CONTRACT:

The contract shall be constituted according to and subject to the Laws of India and jurisdiction of the High Court of Bilaspur, Chhattisgarh.

Compliance with Labour Regulations-During continuance of contract, the contractor shall

abide at all times by all applicable existing labour enactment and rules made there under, regulations, notifications and bye laws of state and central Govt or local authority that may be passed/issued or may be issued.

25. LANGUAGE AND MEASURES:

All documents pertaining to the Contract including specifications, schedules, notice correspondences, operating and maintenance instructions, drawings or any other writings shall be written in English / Hindi language. The metric system of measurement shall be used in this contract.

26. CORRESPONDENCE:

i. Any notice to the eligible Contractor under the terms of the contract shall be served by registered mail to the registered office of the eligible Contractor or by hand to the authorized local representative of the eligible Contractor and copy by post to the eligible SI's principal place of business.

ii. Any notice to CREDA shall be served to the CEO, CREDA, Raipur in the same manner.

27. SECURITY:

The eligible Contractor shall treat the details of the specifications and other documents as private and confidential and they shall not be reproduced without written authorization from CREDA.

28. AGREEMENT:

The successful eligible Contractor shall have to enter into an agreement with the CEO, CREDA in the approved contract agreement form within 07 days of the receipt of call from CREDA.

29. TENDER EVALUATION CRITERIA

- a) Offer of only those parties who are found qualifying based on Technical Evaluation Criteria will be taken into further consideration and prices of only those parties qualifying based of these criterion will be opened. If a bidder is not having sufficient MAAT(Minimum Annual Average Turnover), then he would be given choice to withdraw from one or more packages before opening of price bid.
- b) CREDA retains right to negotiate rates or other terms with L-1 of each package.
- c) Conditional tenders shall not be accepted.

30. ALLOCATION OF TARGETS AND AREA OF WORK

The allocation of district wise quantities shall be done at approved rates to eligible bidders who has quoted lowest rates for that package.

If more than one bidders have offered same rates for a particular package then the work will be divided equally among them.

31. EXTENSION IN SCOPE OF WORK

Up to 30% extension in work quantity can be awarded which will be binding on bidder up to 1 year from the date of award.

We (on behalf of Eligible SI/Tenderer) have read all the above stated details & accept to comply with it in total.

(Name, Signature & Seal of the Tenderer)

SCOPE OF WORK:-

1. Laying Grouting and other labour works

CREDA shall supply all the required material for PDN at site. The scope of work of contractor shall be as under:-

All the work required to be done for PDN such as laying of transmission line, Distribution lines, Grouting and installation of Pole, Fixing of stay set, earthing kit etc, as directed by site in charge and as per layout provided by the CREDA. The scope of work includes:

1. Grouting Poles,
2. Laying of transmission Lines, Over Head Pole to Pole/ Including Insulators/ Cable fixture)
3. Laying of transmission Lines overhead with power arrangement of PVC Pole pipe and 02 junction boxes (up & down) in case of Street lights.
- 4 . Laying of transmission Lines (Pole to House Holds/ Including Insulators)
5. Individual house wiring as per drawings
6. Fixing of stay sets,
7. Installation Earthing Coils for Pole.
8. Installation of Street Light Brackets, Wall Mount Brackets etc.
9. Construction of control room (11' x 11') for 1 KW & 2 KW Solar power plant.

2. Electrical, Electronics and Other PDN Materials

Supply cables of various specifications, supply of Electrical & Electronics items, Luminaries, Fixtures, electrical and electronic hardware & accessories and all other related items of various specifications, as per requirement of CREDA to District Places, at sites in the State of Chhattisgarh. All material is to be delivered either in district head quarter or site as per the instruction of CREDA.

Material supplied should be as per ISI mark and if the item does not come in the category specified in the ISI then also the quality of those items shall be of best available in the category, with due approval of CREDA. All the material shall match with the requirement of the purpose of installation at site.

All the material shall be warranty for two years from the date of supply for any manufacturing defect. Luminaries shall bear warrantee for one year from the date of installation

3. Fabrication Items

The scope of work is to supply of fabrication of MS Pole/ Steel structure/ other specified items. All the related items as per drawing/ designed, specification as required of CREDA to District Bilaspur State of Chhattisgarh. All the scope of work includes :

1. Fabrication and supply of M.S. Pole with Smokgray Paint.
2. Fabrication and supply of M.S. Pipe Street Light Bracket with Painted .Fabrication and supply of Earthing Coils.
3. Fabrication and supply of Stay Set.
4. Fabrication and supply of Cable fixture with Painted.
5. Fabrication and supply of suitable M.S. Street light brackets.
6. Fabrication and supply of suitable M.S. Wall Mount brackets.

Note:-

Such works, not listed in the schedule of work but required for completion of the project shall be deemed to have been included in the scope of this bid.

Package-A

DETAILS OF SITES FOR LAYING OF PDN WORK FOR SOLAR POWER PLANT

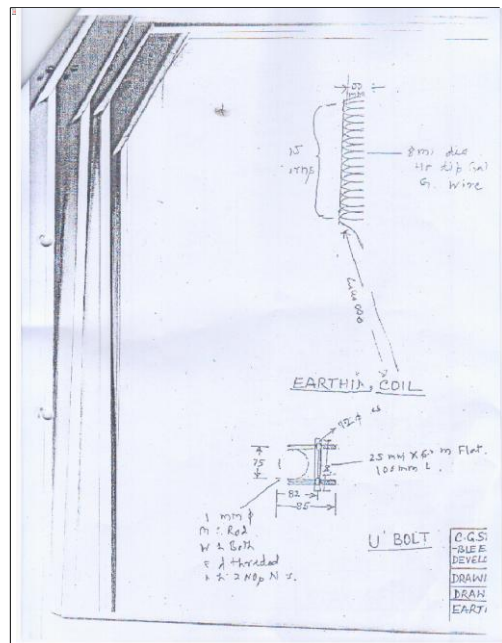
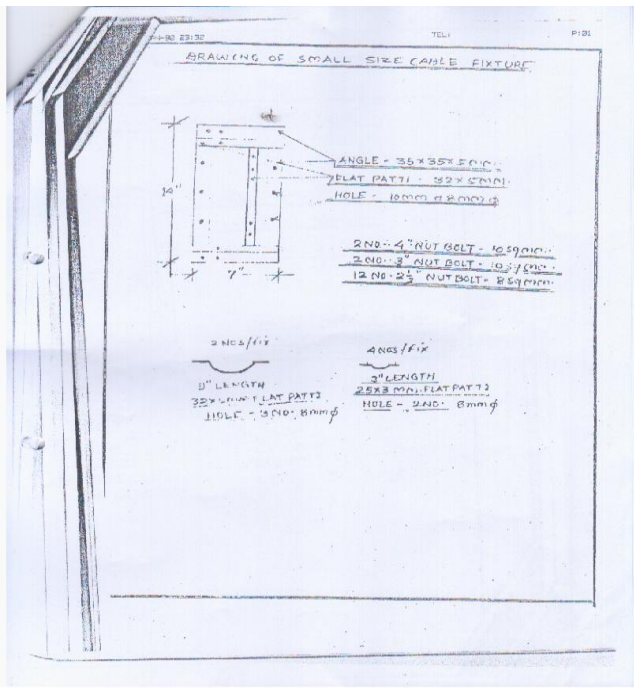
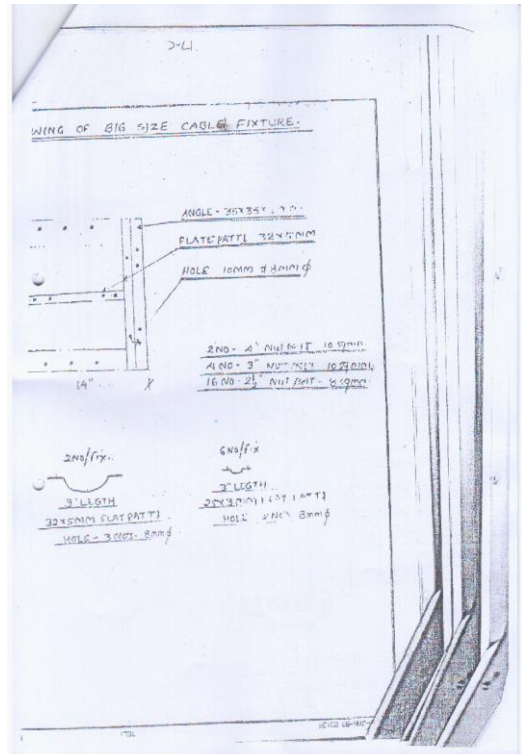
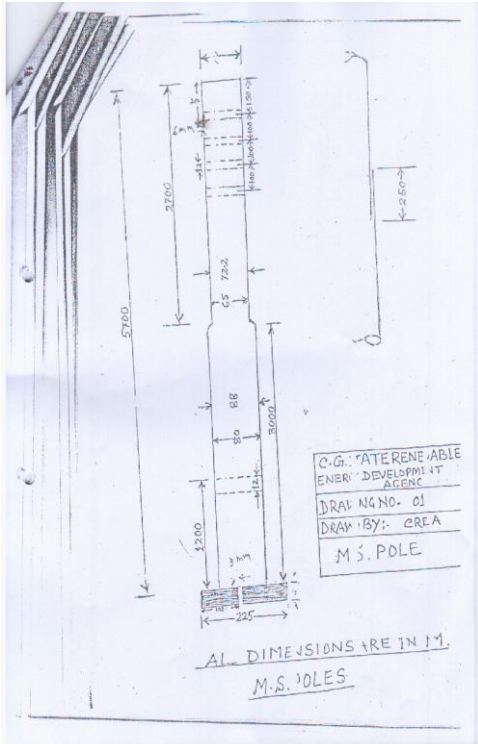
S. N.	District	Price Bid No.	Site	Particulars of Work	Approximate Package Cost (In Rs)
1	Surguja	A1	Vill- Sumerpur (Nageshiyapara) Block- Lundra	Supply and Laying of Power Distribution Network Work(22Nos Street Light) & Construction Of Control Room on including material supply on turn-key basis for 1 KW SPV Power Plants as per Specification and Drawings	446000
2	Surguja	A2	Vill- Raghunathpur, Block- Lundra	Supply and Laying of Power Distribution Network Work(45 Nos Street Light) & Construction Of Control Room on including material supply on turn-key basis for 2 KW SPV Power Plants as per Specification and Drawings	773000
3	Surguja	A3	Vill- Sairrai ,Block- Lundra		773000
4	Surguja	A4	Vill- Sumerpur , Block- Lundra		773000
5	Surguja	A5	Vill- Darrhidih,Block- Lundra		773000
6	Surguja	A6	Vill- Batwahi, Block- Lundra		773000
7	Surguja	A7	Vill-Lamgaon, Block- Lundra		773000
8	Surguja	A8	GrampanchayatBhavan- Raghunathpur, Block- Lundra		104000
9	Surguja	A9	GrampanchayatBhavan - LamgaonBlock- Lundra	104000	
10	Surguja	A10	GrampanchayatBhavan- Sumerpur,Block- Lundra	104000	
11	Surguja	A11	GrampanchayatBhavan - BatwahiBlock- Lundra	104000	
				TOTAL	550000

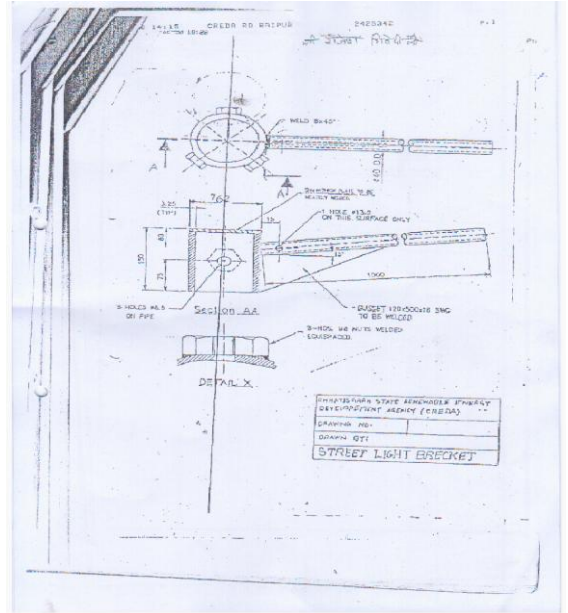
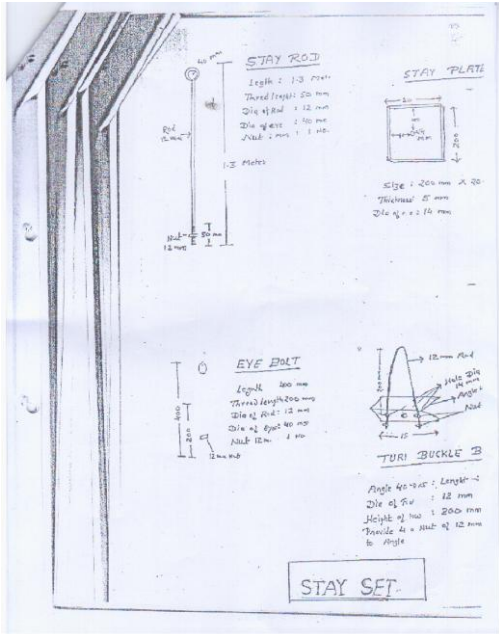
TECHNICAL SPECIFICATIONS

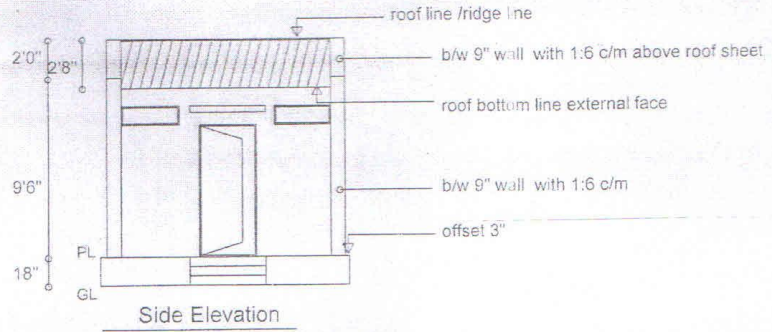
FABRICATION MATERIALS

1. Fabrication of 5.70 mtrs.M.S. Pole, with ISI "B" Class M.S. Pipe as per drawing and specification enclosed with all material with
2. Fabrication of M.S. Pipe Street light bracket and wall mount brackets as per design & drawing specification with hot dip galvanized
3. Fabrication of Earthing coil made from 8 mm G.I. wire with 105 turn of 50 mm inner dia and tail length 1.8 meter with hot dip galvanized
4. Fabrication of stay set complete with 1.3 meter stay rod, 200x200x5 mm stay plate, Eye bolt 400 mm and a turn buckle bow of 12 mm dia and 200 mm height, with 7/12 - 6 mt steel wire rope & "U" both with required nut bolt & washer as per drawing and specification with two coat primer of standard quality with hot dip galvanized.
5. Fabricated cable fixture as per drawing
 1. Type - A
 2. Type - B
6. M.S. tubular pipe should be confirming to ISI "B" class specification.
7. Pole shall be properly capped from Top with M.S. Cap and M.S. plate of size 225 x 225 x5 mm shall be welded at the bottom with one small hole.
8. Street light brackets and wall mount brackets other accessories should be as per **enclosed** drawings and specification.

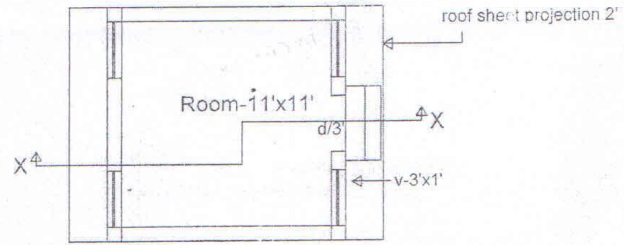
Drawings





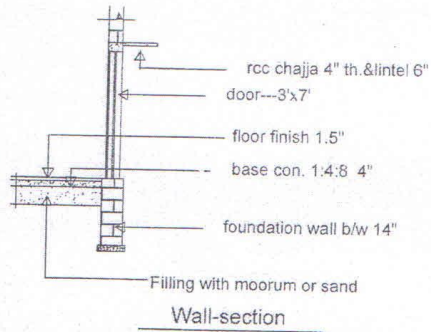
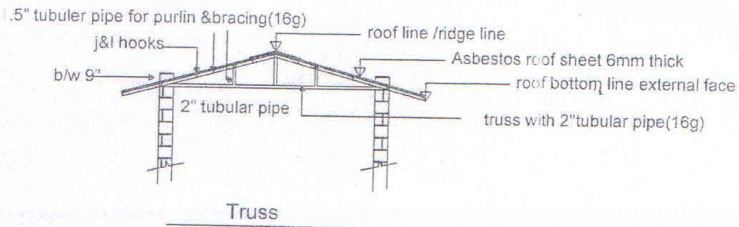
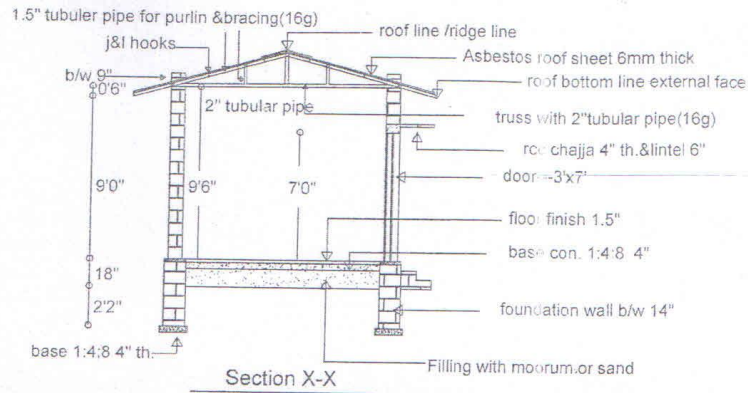


Side Elevation



Plan

Work---	Control Room Building For RVE	
Drawn By---	Aakash Mishra	Cell-9522845174,9302956173 (Regd. No.-350/2000 N.N. Raipur)
Office---	Dubey & Associates Shop No 25 Samta Aarked Raipur	
sign-		date-



Work---	Control Room Building For RVE	
Drawn By---	Aakash Mishra	Cell-9522845174,9302956173
	(Regd. No.-350/2000 N.N. Raipur)	
Office---	Dubey & Associates	
	Shop No 25 Samta Aarked Raipur	
sign-		date-

Wires and Cables

1. All cables & wires shall be as per ISI specifications.
2. Power cable - Unarmored with Aluminum Conductor PVC insulated PVC Sheathed (Heavy Duty) as per IS:1554/1988, part one two core
 - (i) 6 Sq. mm, 2-core and 10Sq. mm, 3-core as per site requirement
 - (ii) 10 Sq. mm, 4-core
3. Power cable - Armoured with Aluminum Conductor PVC insulated PVC Sheathed (Heavy Duty) as per IS:1554/1988, part one four core
 - (i) 10 Sq. mm, 4-core

All copper cables and wires used shall be of copper conductors of suitably cross-section with cross-linked polythene or polyvinyl insulated with polyvinyl sheath. Stranded and flexible cable shall be used. Non-stranded cables shall not be acceptable except otherwise mentioned and permitted.

4. Heavy duty multistand wire and cable P.V.C. insulated twisted bright annealed Copper 1100 Volts, IS 694, Size :- 1.5 Sq. mm, 2.5 sq. mm as per requirement.
5. Exposed cables, wherever, used, shall have UV resistant jacket besides being water resistant.
6. Buried underground cables shall be armored. .
7. Conductor sizes of cables and wires shall be selected based on efficient design criteria such that the overall electrical energy loss in any section of cable or wire is not more than three (3) percent under the designed operating conditions. Conductor sizes of less than 1.5 mm shall not be accepted.
8. Cable/Wire connections shall be soldered, crimp-on type or split-bolt type. Wire nut connectors shall not be used.
9. All cables shall be adequately supported. Outside of the terminal/panels/enclosures shall be protected by conduits. Cables shall be provided with dry type compression glands wherever they enter junction boxes/panels/enclosures.
10. All cables shall be suitably marked or colour coded for easy identification. The marking of length of the cable should clearly marked on the cable
11. Cables and wires shall conform to the relevant standards. Tenderers to specify the specification, for any additional features.
12. Cables should in a packing of at least 100 m each.

3. Electrical, Electronics and Other PDN materials

1. GI Wire
 - (i) 12 no.
 - (ii) 16 no.
2. PVC Ring Insulator
 - (1) P.V.C. Ring Insulator, Heavy duty Size: 12 mm x 12 mm with inner dia 10 mm weather proof (white).
 - (2) P.V.C. Ring Insulator, Heavy duty Size: 20 mm x 20 mm with inner dia 16 mm weather proof (white).
 - (3) P.V.C. Ring Insulator, Heavy duty Size: 26 mm x 26 mm with inner dia 22 mm weather proof (white).
3. Junction box unbreakable thermo plastic. IP 65 protection, suitable for outdoor application, fire retardant up to 750°C chemical resistance suitable for given size and terminal of Hensel make
 - (i) 98 x 98 x 61 – 4 Sq. with terminal suitable for one in two out
 - (ii) 167 x 125 x 98 with terminal five in one out of 16/25 Sq.mm

3.1 COMMON TECHNICAL SPECIFICATIONS FOR LED STREET

- Luminary should have separate compartments for LED circuit & LED Driver for LED lights of 60W & above
- Both the compartments should have separate covers for access with IP65 or more protection. It is preferred to have top opening for access of driver compartment.
- 3 output wires (Phase, Neutral, Earth) each of minimum half meter length.
- The luminary made of Pressure Die Cast Aluminum (ADC 12) housing with corrosion resistant polyester powder coating & safety as per IEC standards. Good thermal management system should be provided to dissipate the heat to ambient air and block any accumulation of dust / water. Luminary equipped with distortion free, clear, heat resistant, toughened and UV stabilized glass / Polycarbonate cover.
- The luminary body temperature should not exceed 50°C from ambient after 24 hours of continuous operation & impact resistance \geq IK05
- Constant current & voltage internal driver (preferably Plug & Play type) with protection of minimum 5 kV internal surges; In-built protection against Under Voltage, High Voltage & Short Circuit Current. The Drivers should meet BIS standards. Bidder should include documents for the same.
- The LED street lights (60W & above) should have Secondary lens array for optimized roadway photometric distribution. The lens should be XML lens of 60°X120° or higher and material of optical high grade PMMA with more than 90% light transmittance.

(1) 25W LED STREET LIGHT

Parameter	Specifications	Applicable IS
Total System Wattage (Luminary Wattage)	Max. 25W	
LED Assembly	SMD LED Chips mounted on Copper MCPCB where the base metal is of Aluminum	16106
LED Drive Current	350 – 1000 mA	
Luminary Housing	Suitable for side entry mounting for 25mm to 40mm OD pipe bracket complete with bracket & locking bolt	
Luminous Flux	Minimum 1300 lumens	16106
Luminary Angle	Fully Cut-Off	
Light Distribution	Batwing	

Hardware

1. The hardware material shall be of ISI specification wherever mentioned in the Price Bid. If mentioned items does not come in the category of specified in ISI then also the quality of those items shall be of best available in the category.
2. All the material shall match with the requirement of the purpose of installation at site.

PRICEBID(A1)

No3941/CREDA/SPV-PDN/2018-19

Date: -5.9.18

For Supply and Laying of Power Distribution Network Work(22Nos Street Light) & Construction Of Control Roomon including material supply on turn-key basis for 1 KW SPV Power Plants as per of Vill- Sumerpur (Nageshiyapara) Block- Lundra District - Surguja, (C.G.)

S. No.	Particulars of Work	Qty.	Rate (in Rs)
A	B	C	D
1	Control Room(Size 11' *11')	1 Nos	
2	M.S. Poles	1 Nos	
3	Street Light Bracket	1 Nos	
4	LED Street Light Luminaries 25 watt.	1 Nos	
5	Cable Fixtures (14" X 7") type- B	1 Nos	
6	Junction Box 88X88X53-2.5 Sq mm with Connector	1 Nos	
7	Unarmoured cable 10 sq.mm 3 core	1Mtr	
8	Copper Wire 1.5 Sq mm	1Mtr	
9	PVC insulation tape	1 Nos	
10	Pole Grouting Size (1.5 X1.5 X 3.0 ft.) in 1:3:6 concrete mix.	1 Nos	
11	Laying of over head cable pole to pole with fixing and fitting of cable fixture.	1 Nos	
12	Luminaries Street Light, Junction Box & Bracket Fitting	1 Nos	
13	Earthing kit	1 Nos	
14	Grouting of earthing coil	1 Nos	
15	G.I.wire 10 no.	1Kg	
16	Ring insulator size 12 X 12 Dia.10mm	1Nos	
17	Stay set	1 Nos	
18	Stay set Grouting	1 Nos	
	Total Package Cost (in Rs& in Below Percent)		

Note:- Rates are inclusive of all incidental expenses & taxes except service tax.
Rate should not be exceed from package cost. Rates to be coated below of package cost (in percentage)

1. Work shall be confirming to BIS specifications. All there required safety measures shall be taken care of.
2. Testing to the satisfaction of competent authority of CREDA after completion of work is included in the quoted rate.

Place :

Date :

Tenderer's Signature

Full Name.....

Designation.....

Company SEAL

PRICEBID(A2)

No 3941/CREDA/SPV-PDN/2018-19

Date: -5.9.18

**For Supply and Laying of Power Distribution Network Work(45Nos Street Light) &
Construction Of Control Roomon including material supply on turn-key basis for 2 KW SPV
Power Plants as per of Vill- Raghunathpur, Block- Lundra - Surguja,**

S. No.	Particulars of Work	Qty.	Rate (in Rs)
A	B	C	F
1	Construction Of Control Room Size 11'* 11')	1 Nos	
2	M.S. Poles	1 Nos	
3	Street Light Bracket	1 Nos	
4	LED Street Light Luminaries 25 watt.	1 Nos	
5	Cable Fixtures (14" X 7") type- B	1 Nos	
6	Junction Box 88X88X53-2.5 Sq mm with Connector	1 Nos	
7	Unarmoured cable 10 sq.mm 4 core	1 Mtr	
8	Copper Wire 1.5 Sq mm	1 Mtr	
9	PVC insulation tape	1 Nos	
10	Pole Grouting Size (1.5 X1.5 X 3.0 ft.) in 1:3:6 concrete mix.	1 Nos	
11	Laying of over head cable pole to pole with fixing and fitting of cable fixture.	1 Nos	
12	Luminaries Street Light, Junction Box & Bracket Fitting	1 Nos	
13	Earthing kit	1 Nos	
14	Grouting of earthing coil	1 Nos	
15	G.I.wire 10 no.	1Kg	
16	G.I.wire 16 no.	1Kg	
17	Ring insulator size 12 X 12 Dia.10mm	1 Nos	
18	Stay set	1 Nos	
19	Stay set Grouting	1 Nos	
	Total Package Cost (in Rs& in Below Percent)		

Note:- Rates are inclusive of all incidental expenses & taxes except service tax.

Rate should not be exceed from package cost. Rates to be coated below of package cost (in percentage)

1. Work shall be confirming to BIS specifications. All there required safety measures shall be taken care of.
2. Testing to the satisfaction of competent authority of CREDA after completion of work is include in the quoted rate.

Place :
Date :
Company SEAL

Tenderer's Signature
Full Name.....
Designation.....

PRICEBID(A3)

No 3941/CREDA/SPV-PDN/2018-19

Date: -5.9.18

**For Supply and Laying of Power Distribution Network Work(45Nos Street Light) &
Construction Of Control Roomon including material supply on turn-key basis for 2 KW SPV
Power Plants as per of Vill- Sairrai, Block- Lundra - Surguja,**

S. No.	Particulars of Work	Qty.	Rate (in Rs)
A	B	C	F
1	Construction Of Control Room Size 11'* 11')	1 Nos	
2	M.S. Poles	1 Nos	
3	Street Light Bracket	1 Nos	
4	LED Street Light Luminaries 25 watt.	1 Nos	
5	Cable Fixtures (14" X 7") type- B	1 Nos	
6	Junction Box 88X88X53-2.5 Sq mm with Connector	1 Nos	
7	Unarmoured cable 10 sq.mm 4 core	1 Mtr	
8	Copper Wire 1.5 Sq mm	1 Mtr	
9	PVC insulation tape	1 Nos	
10	Pole Grouting Size (1.5 X1.5 X 3.0 ft.) in 1:3:6 concrete mix.	1 Nos	
11	Laying of over head cable pole to pole with fixing and fitting of cable fixture.	1 Nos	
12	Luminaries Street Light, Junction Box & Bracket Fitting	1 Nos	
13	Earthing kit	1 Nos	
14	Grouting of earthing coil	1 Nos	
15	G.I.wire 10 no.	1Kg	
16	G.I.wire 16 no.	1Kg	
17	Ring insulator size 12 X 12 Dia.10mm	1 Nos	
18	Stay set	1 Nos	
19	Stay set Grouting	1 Nos	
	Total Package Cost (in Rs& in Below Percent)		

Note:-Rates are inclusive of all incidental expenses & taxes except service tax.

Rate should not be exceed from package cost. Rates to be coated below of package cost (in percentage)

1. Work shall be confirming to BIS specifications. All there required safety measures shall be taken care of.
2. Testing to the satisfaction of competent authority of CREDA after completion of work is include in the quoted rate.

Place :
Date :
Company SEAL

Tenderer's Signature
Full Name.....
Designation.....

PRICEBID(A4)

No 3941/CREDA/SPV-PDN/2018-19

Date: -5.9.18

**For Supply and Laying of Power Distribution Network Work(45Nos Street Light) &
Construction Of Control Roomon including material supply on turn-key basis for 2 KW SPV
Power Plants as per of Vill- Sumerpur, Block- Lundra - Surguja,**

S. No.	Particulars of Work	Qty.	Rate (in Rs)
A	B	C	F
1	Construction Of Control Room Size 11'* 11')	1 Nos	
2	M.S. Poles	1 Nos	
3	Street Light Bracket	1 Nos	
4	LED Street Light Luminaries 25 watt.	1 Nos	
5	Cable Fixtures (14" X 7") type- B	1 Nos	
6	Junction Box 88X88X53-2.5 Sq mm with Connector	1 Nos	
7	Unarmoured cable 10 sq.mm 4 core	1 Mtr	
8	Copper Wire 1.5 Sq mm	1 Mtr	
9	PVC insulation tape	1 Nos	
10	Pole Grouting Size (1.5 X1.5 X 3.0 ft.) in 1:3:6 concrete mix.	1 Nos	
11	Laying of over head cable pole to pole with fixing and fitting of cable fixture.	1 Nos	
12	Luminaries Street Light, Junction Box & Bracket Fitting	1 Nos	
13	Earthing kit	1 Nos	
14	Grouting of earthing coil	1 Nos	
15	G.I.wire 10 no.	1Kg	
16	G.I.wire 16 no.	1Kg	
17	Ring insulator size 12 X 12 Dia.10mm	1 Nos	
18	Stay set	1 Nos	
19	Stay set Grouting	1 Nos	
	Total Package Cost (in Rs& in Below Percent)		

Note:- Rates are inclusive of all incidental expenses & taxes except service tax.

Rate should not be exceed from package cost. Rates to be coated below of package cost (in percentage)

1. Work shall be confirming to BIS specifications. All there required safety measures shall be taken care of.
2. Testing to the satisfaction of competent authority of CREDA after completion of work is include in the quoted rate.

Place :
Date :
Company SEAL

Tenderer's Signature
Full Name.....
Designation.....

PRICEBID(A5)

No 3941/CREDA/SPV-PDN/2018-19

Date: -5.9.18

**For Supply and Laying of Power Distribution Network Work(45Nos Street Light) &
Construction Of Control Roomon including material supply on turn-key basis for 2 KW SPV
Power Plants as per of Vill- Darridih, Block- Lundra - Surguja,**

S. No.	Particulars of Work	Qty.	Rate (in Rs)
A	B	C	F
1	Construction Of Control Room Size 11'* 11')	1 Nos	
2	M.S. Poles	1 Nos	
3	Street Light Bracket	1 Nos	
4	LED Street Light Luminaries 25 watt.	1 Nos	
5	Cable Fixtures (14" X 7") type- B	1 Nos	
6	Junction Box 88X88X53-2.5 Sq mm with Connector	1 Nos	
7	Unarmoured cable 10 sq.mm 4 core	1 Mtr	
8	Copper Wire 1.5 Sq mm	1 Mtr	
9	PVC insulation tape	1 Nos	
10	Pole Grouting Size (1.5 X1.5 X 3.0 ft.) in 1:3:6 concrete mix.	1 Nos	
11	Laying of over head cable pole to pole with fixing and fitting of cable fixture.	1 Nos	
12	Luminaries Street Light, Junction Box & Bracket Fitting	1 Nos	
13	Earthing kit	1 Nos	
14	Grouting of earthing coil	1 Nos	
15	G.I.wire 10 no.	1Kg	
16	G.I.wire 16 no.	1Kg	
17	Ring insulator size 12 X 12 Dia.10mm	1 Nos	
18	Stay set	1 Nos	
19	Stay set Grouting	1 Nos	
	Total Package Cost (in Rs& in Below Percent)		

Note:- Rates are inclusive of all incidental expenses & taxes except service tax.

Rate should not be exceed from package cost. Rates to be coated below of package cost (in percentage)

1. Work shall be confirming to BIS specifications. All the required safety measures shall be taken care of.
2. Testing to the satisfaction of competent authority of CREDA after completion of work is included in the quoted rate.

Place :
Date :
Company SEAL

Tenderer's Signature
Full Name.....
Designation.....

PRICEBID(A6)

No 3941/CREDA/SPV-PDN/2018-19

Date: -5.9.18

**For Supply and Laying of Power Distribution Network Work(45Nos Street Light) &
Construction Of Control Roomon including material supply on turn-key basis for 2 KW SPV
Power Plants as per of Vill- Batwahi, Block- Lundra - Surguja,**

S. No.	Particulars of Work	Qty.	Rate (in Rs)
A	B	C	F
1	Construction Of Control Room Size 11'* 11')	1 Nos	
2	M.S. Poles	1 Nos	
3	Street Light Bracket	1 Nos	
4	LED Street Light Luminaries 25 watt.	1 Nos	
5	Cable Fixtures (14" X 7") type- B	1 Nos	
6	Junction Box 88X88X53-2.5 Sq mm with Connector	1 Nos	
7	Unarmoured cable 10 sq.mm 4 core	1 Mtr	
8	Copper Wire 1.5 Sq mm	1 Mtr	
9	PVC insulation tape	1 Nos	
10	Pole Grouting Size (1.5 X1.5 X 3.0 ft.) in 1:3:6 concrete mix.	1 Nos	
11	Laying of over head cable pole to pole with fixing and fitting of cable fixture.	1 Nos	
12	Luminaries Street Light, Junction Box & Bracket Fitting	1 Nos	
13	Earthing kit	1 Nos	
14	Grouting of earthing coil	1 Nos	
15	G.I.wire 10 no.	1Kg	
16	G.I.wire 16 no.	1Kg	
17	Ring insulator size 12 X 12 Dia.10mm	1 Nos	
18	Stay set	1 Nos	
19	Stay set Grouting	1 Nos	
	Total Package Cost (in Rs& in Below Percent)		

Note:-Rates are inclusive of all incidental expenses & taxes except service tax.

**Rate should not be exceed from package cost. Rates to be coated below of package cost
(in percentage)**

1. Work shall be confirming to BIS specifications. All there required safety measures shall be taken care of.
2. Testing to the satisfaction of competent authority of CRED A after completion of work is include in the quoted rate.

Place :
Date :
Company SEAL

Tenderer's Signature
Full Name.....
Designation.....

PRICEBID(A7)

No 3941/CREDA/SPV-PDN/2018-19

Date: -5.9.18

**For Supply and Laying of Power Distribution Network Work(45Nos Street Light) &
Construction Of Control Roomon including material supply on turn-key basis for 2 KW SPV
Power Plants as per of Vill- Lamgaon, Block- Lundra - Surguja,**

S. No.	Particulars of Work	Qty.	Rate (in Rs)
A	B	C	F
1	Construction Of Control Room Size 11'* 11')	1 Nos	
2	M.S. Poles	1 Nos	
3	Street Light Bracket	1 Nos	
4	LED Street Light Luminaries 25 watt.	1 Nos	
5	Cable Fixtures (14" X 7") type- B	1 Nos	
6	Junction Box 88X88X53-2.5 Sq mm with Connector	1 Nos	
7	Unarmoured cable 10 sq.mm 4 core	1 Mtr	
8	Copper Wire 1.5 Sq mm	1 Mtr	
9	PVC insulation tape	1 Nos	
10	Pole Grouting Size (1.5 X1.5 X 3.0 ft.) in 1:3:6 concrete mix.	1 Nos	
11	Laying of over head cable pole to pole with fixing and fitting of cable fixture.	1 Nos	
12	Luminaries Street Light, Junction Box & Bracket Fitting	1 Nos	
13	Earthing kit	1 Nos	
14	Grouting of earthing coil	1 Nos	
15	G.I.wire 10 no.	1Kg	
16	G.I.wire 16 no.	1Kg	
17	Ring insulator size 12 X 12 Dia.10mm	1 Nos	
18	Stay set	1 Nos	
19	Stay set Grouting	1 Nos	
	Total Package Cost (in Rs& in Below Percent)		

Note:-Rates are inclusive of all incidental expenses & taxes except service tax.

**Rate should not be exceed from package cost. Rates to be coated below of package cost
(in percentage)**

1. Work shall be confirming to BIS specifications. All there required safety measures shall be taken care of.
2. Testing to the satisfaction of competent authority of CREDA after completion of work is include in the quoted rate.

Place :
Date :
Company SEAL

Tenderer's Signature
Full Name.....
Designation.....

PRICEBID(A8)

No 3941/CREDA/SPV-PDN/2018-19

Date: -5.9.18

For Supply and Laying of Indoor & 5Nos Street light Power Distribution Network Work on including material supply on turn-key basis for 2 KW SPV Power Plants as per of Gram PanchaytBhawanRaghunathpur, Block- Lundra - Surguja,

S. No.	Particulars of Work	Qty.	Rate (in Rs)
A	B	C	D
1	25 watt. LED Street Light Luminaries with Lamp	1 Nos	
2	Indoor T-5 Lumanari with decorative serrated deffuser, duly pre wired with T-5 lamp 14W.	1 Nos	
3	Heavy duty multi stand wire and cable P.V.C. insulated twisted bright annealed Copper 1100 Volts ISI 694 make size. 1.5 Sq.mm,one core	1 Mtr	
4	Switch 6A Flash type ISI make-	1 Nos	
5	Socket 6 amp. ISI Make 05 Pin	1 Nos	
6	Power Plug 16 amp.	1 Nos	
7	PVC Casing &Caping, ISI make Saraswati, Pressfit or equivalent make Size (1) 25 mm	1 Mtr	
8	FRP/PVC Board ISI make Size- 100mmx100mmx50mm	1 Nos	
9	FRP/PVC Board ISI make Size-175 mmx100mmx 50mm	1 Nos	
10	P.V.C. Square Box size:- 100mmx100mm Make: Shreenath or equivalent.	1 Nos	
11	Tata Nails , Size: 38mmx50mm.	1 Nos	
12	Screw Nata fold, Size: 75mmx10 No.	1 Nos	
13	Steel Screw , Size: 13 mmx 6 No.	1 Nos	
14	P.V.C Insulation Tape Size: 19mmx10mts. ISI make.	1 Nos	
15	Ceilling Rose	1 Nos	
16	M.S Pole	1 Nos	

17	Street Light Bracket	1 Nos	
18	Cable Fixture (14" * 7') Type B	1 Nos	
19	Junction Box	1 Nos	
20	Unarmoured cable 2 Core,6 Sq.mm	1 Mtr	
21	Earthing Kit	1 Nos	
22	laying of Transmission Line (pole to pole)	1 Nos	
23	Grouting work of pole	1 Nos	
24	Fixing & Grouting of Earthing Coil	1 Nos	
25	Fixing & Fitting of Street light luminari	1 Nos	
26	Fixing and fitting of Indoor Point	1 Nos	
27	Fixing and fitting of Socket Point	1 Nos	
28	Fixing and fitting of Power Point	1 Nos	
29	Fixing and fitting of Fan Point	1 Nos	
	Total Package Cost (in Rs& in Below Percent)		

Note:-Rates are inclusive of all incidental expenses & taxes except service tax.

Rate should not be exceed from package cost. Rates to be coated below of package cost (in percentage)

1. Work shall be confirming to BIS specifications. All the required safety measures shall be taken care of.
2. Testing to the satisfaction of competent authority of CREDA after completion of work is included in the quoted rate.

Place :
Date :
Company SEAL

Tenderer's Signature
Full Name.....
Designation.....

PRICEBID(A9)

No 3941/CREDA/SPV-PDN/2018-19

Date: -5.9.18

For Supply and Laying of Indoor & 5Nos Street light Power Distribution Network including material supply on turn-key basis for 2 KW SPV Power Plants as per of - Gram PanchaytBhawanLamgaon, Block- Lundra - Surguja,

S. No.	Particulars of Work	Qty.	Rate (in Rs)
A	B	C	D
1	25 watt. LED Street Light Luminaries with Lamp	1 Nos	
2	Indoor T-5 Lumanari with decorative serrated deffuser, duly pre wired with T-5 lamp 14W.	1 Nos	
3	Heavy duty multi stand wire and cable P.V.C. insulated twisted bright annealed Copper 1100 Volts ISI 694 make size. 1.5 Sq.mm,one core	1 Mtr	
4	Switch 6A Flash type ISI make-	1 Nos	
5	Socket 6 amp. ISI Make 05 Pin	1 Nos	
6	Power Plug 16 amp.	1 Nos	
7	PVC Casing &Caping, ISI make Saraswati, Pressfit or equivalent make Size (1) 25 mm	1 Mtr	
8	FRP/PVC Board ISI make Size- 100mmx100mmx50mm	1 Nos	
9	FRP/PVC Board ISI make Size-175 mmx100mmx 50mm	1 Nos	
10	P.V.C. Square Box size:- 100mmx100mm Make: Shreenath or equivalent.	1 Nos	
11	Tata Nails , Size: 38mmx50mm.	1 Nos	
12	Screw Nata fold, Size: 75mmx10 No.	1 Nos	
13	Steel Screw , Size: 13 mmx 6 No.	1 Nos	
14	P.V.C Insulation Tape Size: 19mmx10mts. ISI make.	1 Nos	
15	Ceilling Rose	1 Nos	
16	M.S Pole	1 Nos	

17	Street Light Bracket	1 Nos	
18	Cable Fixture (14" * 7') Type B	1 Nos	
19	Junction Box	1 Nos	
20	Unarmoured cable 2 Core,6 Sq.mm	1 Mtr	
21	Earthing Kit	1 Nos	
22	laying of Transmission Line (pole to pole)	1 Nos	
23	Grouting work of pole	1 Nos	
24	Fixing & Grouting of Earthing Coil	1 Nos	
25	Fixing & Fitting of Street light luminari	1 Nos	
26	Fixing and fitting of Indoor Point	1 Nos	
27	Fixing and fitting of Socket Point	1 Nos	
28	Fixing and fitting of Power Point	1 Nos	
29	Fixing and fitting of Fan Point	1 Nos	
Total Package Cost (in Rs& in Below Percent)			

Note:- Rates are inclusive of all incidental expenses & taxes except service tax.

Rate should not be exceed from package cost. Rates to be coated below of package cost (in percentage)

1. Work shall be confirming to BIS specifications. All the required safety measures shall be taken care of.
2. Testing to the satisfaction of competent authority of CREDA after completion of work is included in the quoted rate.

Place :
Date :
Company SEAL

Tenderer's Signature
Full Name.....
Designation.....

PRICEBID(A10)

No 3941/CREDA/SPV-PDN/2018-19

Date: -5.9.18

For Supply and Laying of Indoor & 5Nos Street light Power Distribution Network Workon including material supply on turn-key basis for 2 KW SPV Power Plants as per of Gram PanchaytBhawanSumerpur, Block- Lundra - Surguja,

S . No.	Particulars of Work	Qty.	Rate (in Rs)
A	B	C	D
1	25 watt. LED Street Light Luminaries with Lamp	1 Nos	
2	Indoor T-5 Lumanari with decorative serrated deffuser, duly pre wired with T-5 lamp 14W.	1 Nos	
3	Heavy duty multi stand wire and cable P.V.C. insulated twisted bright annealed Copper 1100 Volts ISI 694 make size. 1.5 Sq.mm,one core	1 Mtr	
4	Switch 6A Flash type ISI make-	1 Nos	
5	Socket 6 amp. ISI Make 05 Pin	1 Nos	
6	Power Plug 16 amp.	1 Nos	
7	PVC Casing &Caping, ISI make Saraswati, Pressfit or equivalent make Size (1) 25 mm	1 Mtr	
8	FRP/PVC Board ISI make Size- 100mmx100mmx50mm	1 Nos	
9	FRP/PVC Board ISI make Size-175 mmx100mmx 50mm	1 Nos	
10	P.V.C. Square Box size:- 100mmx100mm Make: Shreenath or equivalent.	1 Nos	
11	Tata Nails , Size: 38mmx50mm.	1 Nos	
12	Screw Nata fold, Size: 75mmx10 No.	1 Nos	
13	Steel Screw , Size: 13 mmx 6 No.	1 Nos	
14	P.V.C Insulation Tape Size: 19mmx10mts. ISI make.	1 Nos	
15	Ceilling Rose	1 Nos	

16	M.S Pole	1 Nos	
17	Street Light Bracket	1 Nos	
18	Cable Fixture (14" * 7') Type B	1 Nos	
19	Junction Box	1 Nos	
20	Unarmoured cable 2 Core,6 Sq.mm	1 Mtr	
21	Earthing Kit	1 Nos	
22	laying of Transmission Line (pole to pole)	1 Nos	
23	Grouting work of pole	1 Nos	
24	Fixing & Grouting of Earthing Coil	1 Nos	
25	Fixing & Fitting of Street light luminari	1 Nos	
26	Fixing and fitting of Indoor Point	1 Nos	
27	Fixing and fitting of Socket Point	1 Nos	
28	Fixing and fitting of Power Point	1 Nos	
29	Fixing and fitting of Fan Point	1 Nos	

Note:-Rates are inclusive of all incidental expenses & taxes except service tax.

Rate should not be exceed from package cost. Rates to be coated below of package cost (in percentage)

1. Work shall be confirming to BIS specifications. All there required safety measures shall be taken care of.
2. Testing to the satisfaction of competent authority of CREDA after completion of work is include in the quoted rate.

Place :
Date :
Company SEAL

Tenderer's Signature
Full Name.....
Designation.....

PRICEBID(A11)

No 3941/CREDA/SPV-PDN/2018-19

Date: -5.9.18

For Supply and Laying of Indoor & 5Nos Street light Power Distribution Network Work
On including material supply on turn-key basis for 2 KW SPV Power Plants as per of Gram
Panchayt Bhawan Batwahi, Block- Lundra - Surguja,

S. No.	Particulars of Work	Qty.	Rate (in Rs)
A	B	C	F
1	25 watt. LED Street Light Luminaries with Lamp	1 Nos	
2	Indoor T-5 Lumanari with decorative serrated deffuser, duly pre wired with T-5 lamp 14W.	1 Nos	
3	Heavy duty multi stand wire and cable P.V.C. insulated twisted bright annealed Copper 1100 Volts ISI 694 make size. 1.5 Sq.mm,one core	1 Mtr	
4	Switch 6A Flash type ISI make-	1 Nos	
5	Socket 6 amp. ISI Make 05 Pin	1 Nos	
6	Power Plug 16 amp.	1 Nos	
7	PVC Casing & Caping, ISI make Saraswati, Pressfit or equivalent make Size (1) 25 mm	1 Mtr	
8	FRP/PVC Board ISI make Size- 100mmx100mmx50mm	1 Nos	
9	FRP/PVC Board ISI make Size-175 mmx100mmx 50mm	1 Nos	
10	P.V.C. Square Box size:- 100mmx100mm Make: Shreenath or equivalent.	1 Nos	
11	Tata Nails , Size: 38mmx50mm.	1 Nos	
12	Screw Nata fold, Size: 75mmx10 No.	1 Nos	
13	Steel Screw , Size: 13 mmx 6 No.	1 Nos	
14	P.V.C Insulation Tape Size: 19mmx10mts. ISI make.	1 Nos	
15	Ceilling Rose	1 Nos	
16	M.S Pole	1 Nos	

17	Street Light Bracket	1 Nos	
18	Cable Fixture (14" * 7') Type B	1 Nos	
19	Junction Box	1 Nos	
20	Unarmoured cable 2 Core,6 Sq.mm	1 Mtr	
21	Earthing Kit	1 Nos	
22	laying of Transmission Line (pole to pole)	1 Nos	
23	Grouting work of pole	1 Nos	
24	Fixing & Grouting of Earthing Coil	1 Nos	
25	Fixing & Fitting of Street light luminari	1 Nos	
26	Fixing and fitting of Indoor Point	1 Nos	
27	Fixing and fitting of Socket Point	1 Nos	
28	Fixing and fitting of Power Point	1 Nos	
29	Fixing and fitting of Fan Point	1 Nos	
	Total Package Cost (in Rs& in Below Percent)		

Note:-Rates are inclusive of all incidental expenses & taxes except service tax.

Rate should not be exceed from package cost. Rates to be coated below of package cost (in percentage)

1. Work shall be confirming to BIS specifications. All there required safety measures shall be taken care of.
2. Testing to the satisfaction of competent authority of CREDA after completion of work is include in the quoted rate.

Place :
Date :
Company SE

Tenderer's Signature
Full Name.....
Designation.....

judicial stamp of Rs100/-

Agreement

This agreement is hereby made today the _____ day of _____ 2018 at _____ between M/s _____, a company / firm registered under the Companies Act, 1956 / Partnership Act / _____ Act, having its registered office at _____, (hereinafter called as "Tenderer", the term which includes its successors, assigns and legal heirs), through _____, resident of _____ on one hand and Chhattisgarh State Renewable Energy Development Agency-CREDA registered under Societies Act having its Registered office at -----) (hereinafter called as "CREDA" the term which includes its successors, assigns and legal heirs) through Shri J.N.Baiga Executive Engineer CREDA, resident of Larangsai Chaowk, Ambikapur (C.G), on the other hand on the following terms and conditions:-

1. Whereas, the "CREDA" intends to purchase for works _____ (hereinafter called as "Work") for the purpose of installation of Power Distribution Network System for Solar Photovoltaic Power plants to be installed in the villages in the State of Chhattisgarh had floated tender **3941/CREDA/SPV-PDN/2018 Date:5.9.18** for PDN work for SPV Power Plant at the Regional offices CREDA. The "Tenderer" had submitted their rates and agreed to supply/perform the " Work " to CREDA on the rates appended hereto in Annexure No. 1, as per the terms and conditions of the tender already agreed upon, and,
2. Whereas, the rates quoted by the "Tenderer" are inclusive of all taxes, duties, levies, transport and all other incidental expenses F.O.R. at site but including GST. The "Tenderer" shall not increase the rates of the " Work " up to one year from the date of agreement and the rates mentioned in Annexure -1 shall be valid for a further period with mutual agreement, and,
3. Whereas, the "Tenderer" is committed to execute the " Work " at the ordered site, on the rates already agreed upon, within the schedule mentioned in the Work orders that shall be issued from time to time, and,
4. Whereas, it has been also agreed upon that during any disputes regarding interpretation of any of the clauses of this agreement, the decision of the "Executive Engineer Officer, CREDA" shall be final and binding on both the parties,
5. Whereas, it is agreed upon that all the terms and conditions of the tender and work/ supply orders which have already been agreed upon shall form part of this agreement,
6. Whereas, it has also been agreed that for any disputes arising, the jurisdiction shall be the Courts of Raipur, In witness whereof, both the parties thereto, put their signatures below:

Witness

1-----

2-----

For and on behalf of

"Tenderer"

For and on behalf of

"CREDA"
